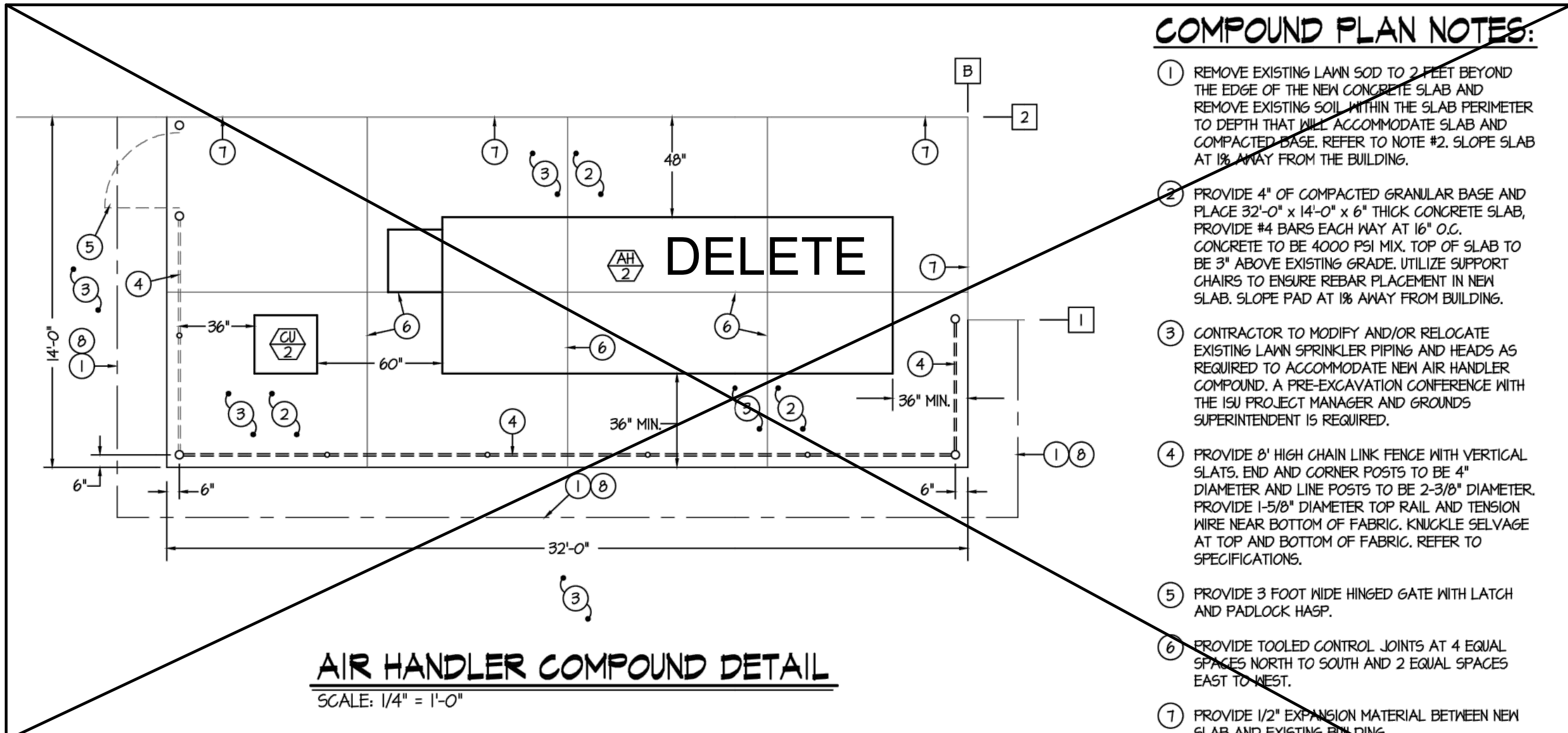
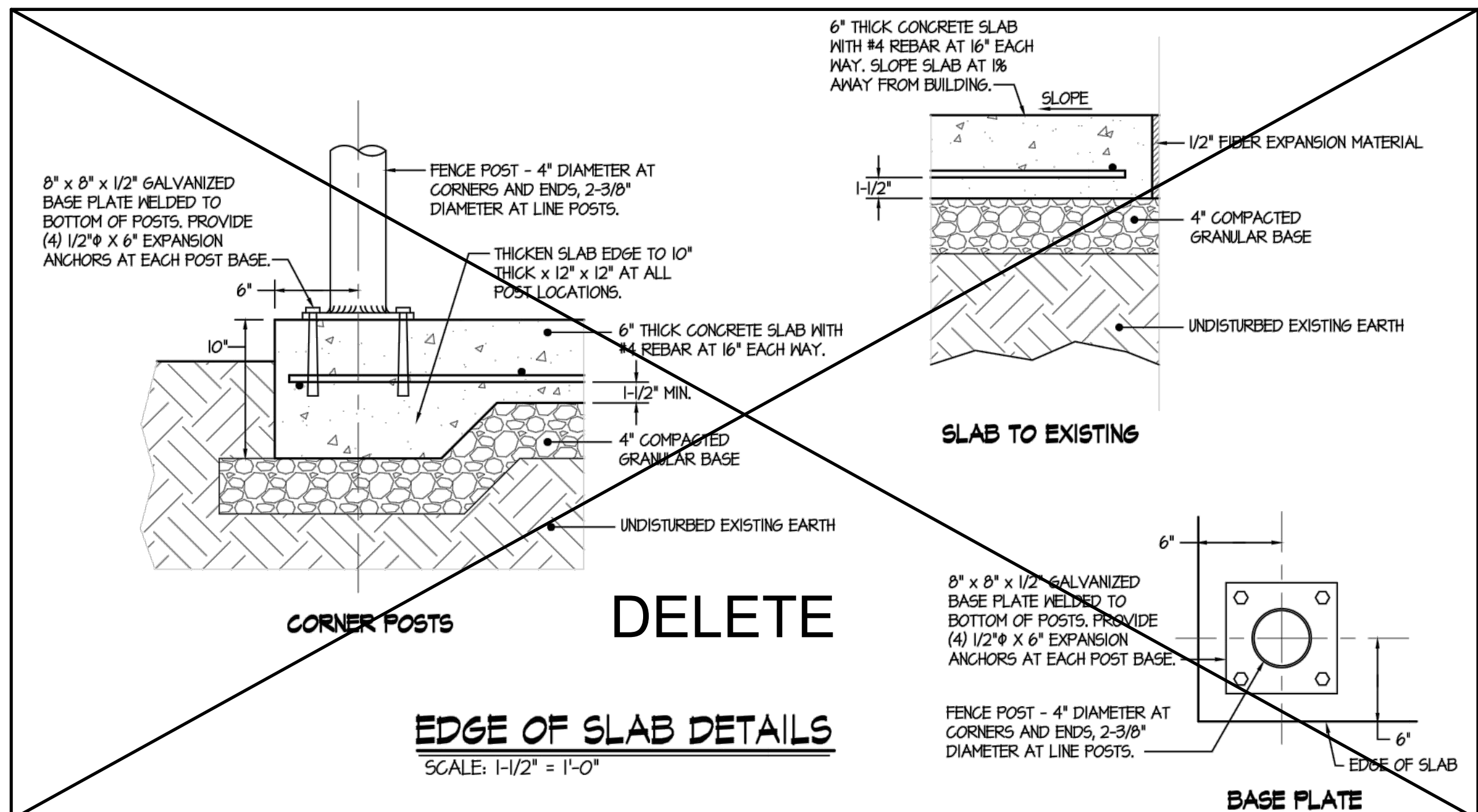
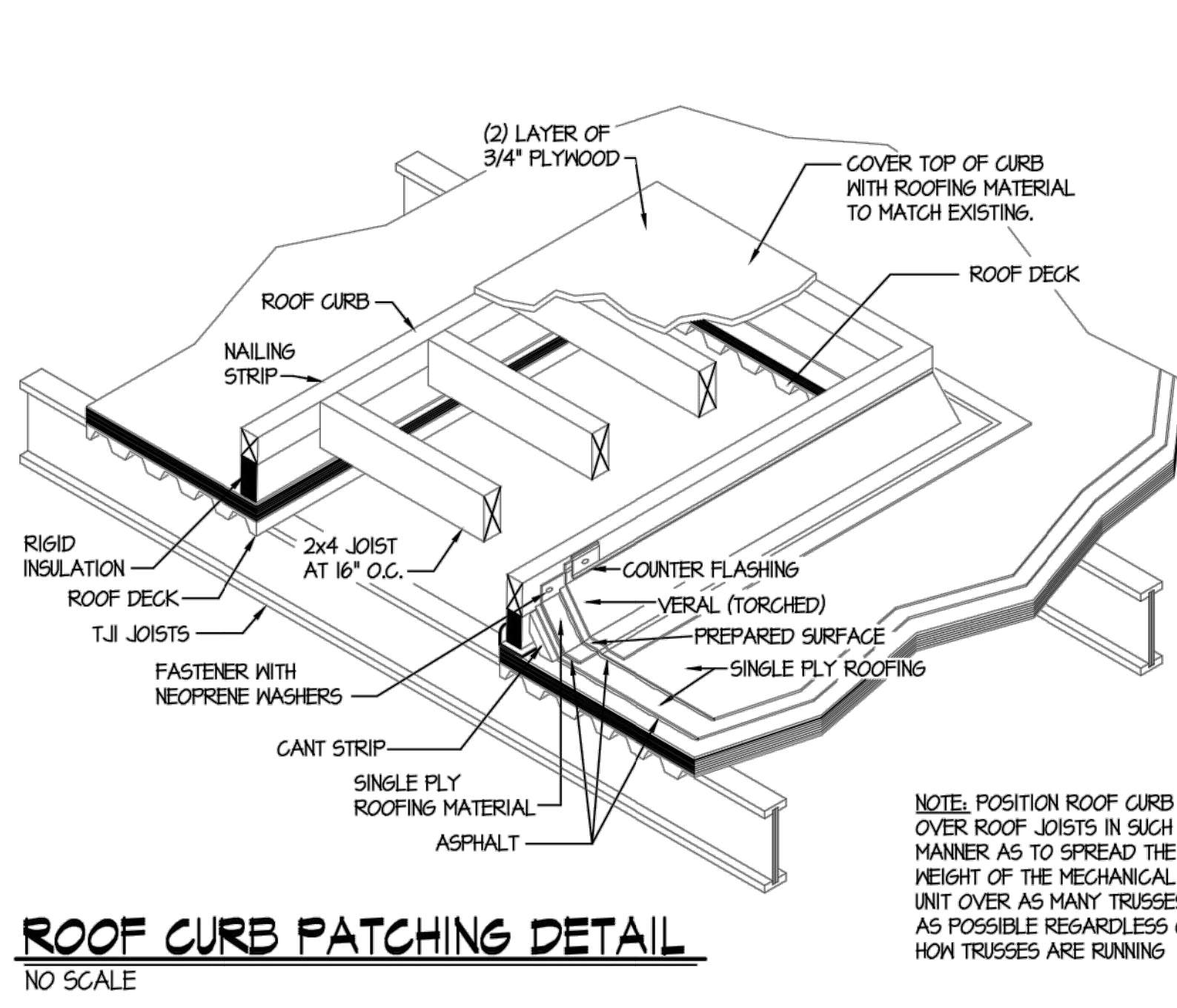
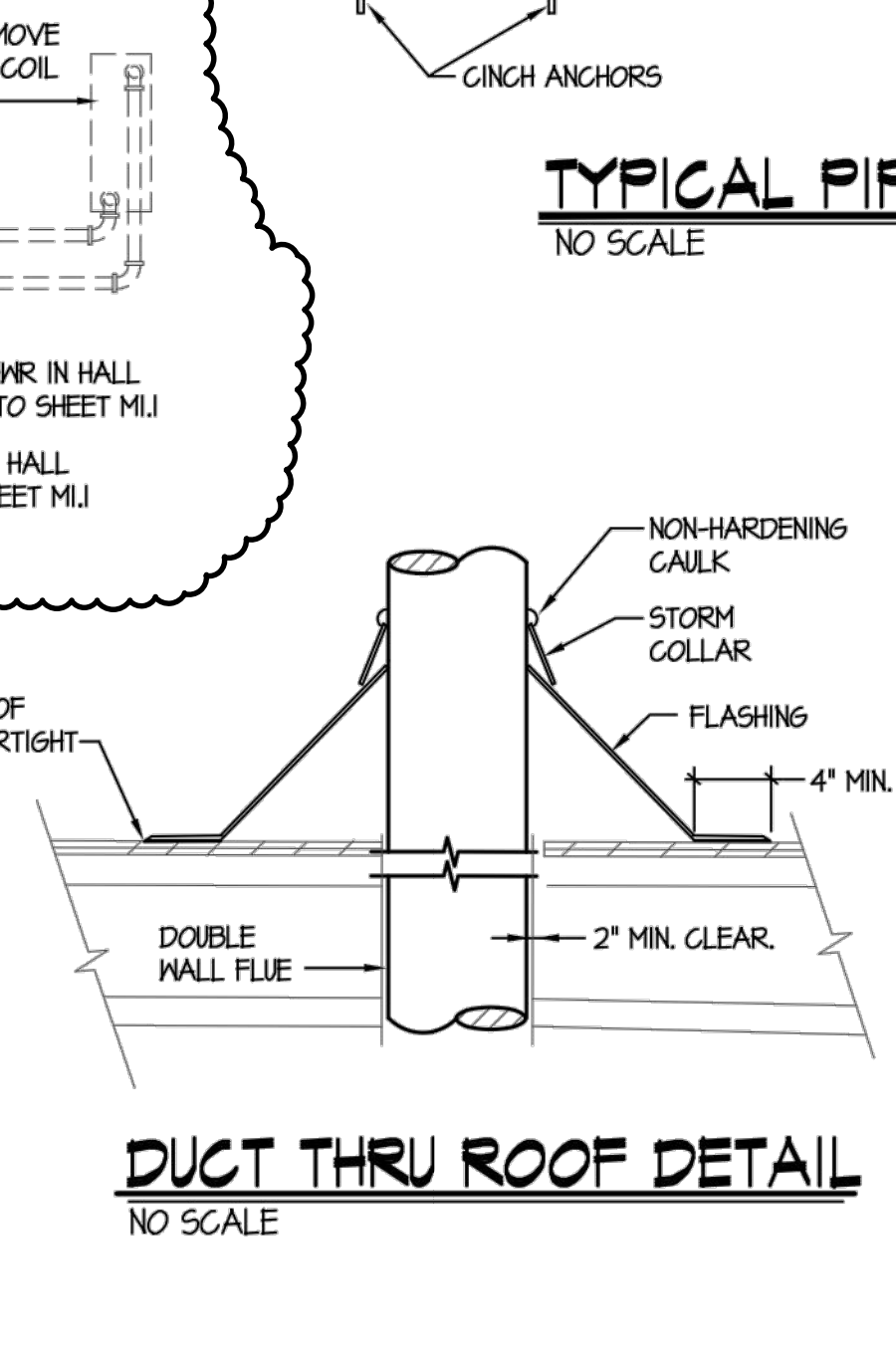
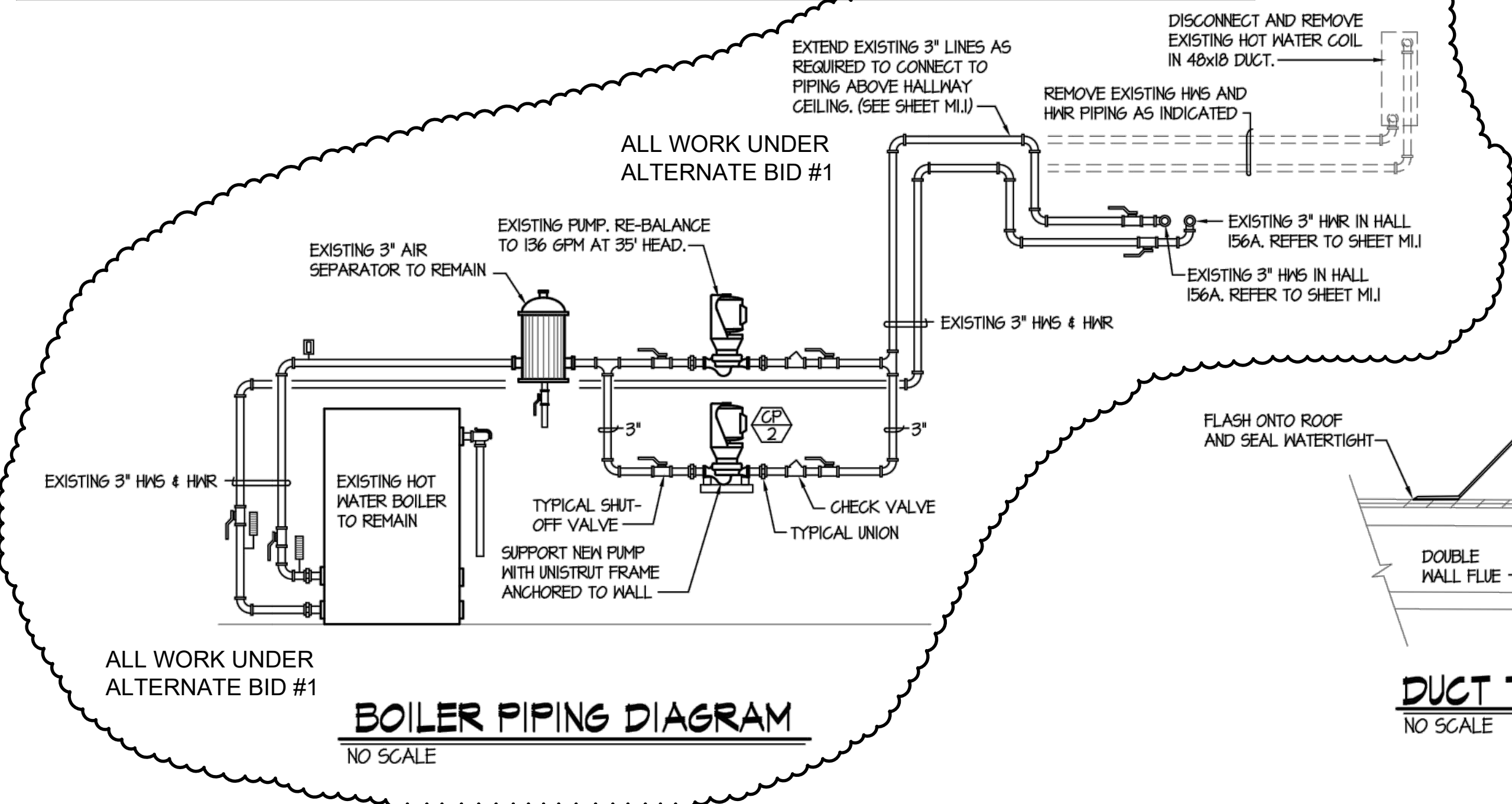
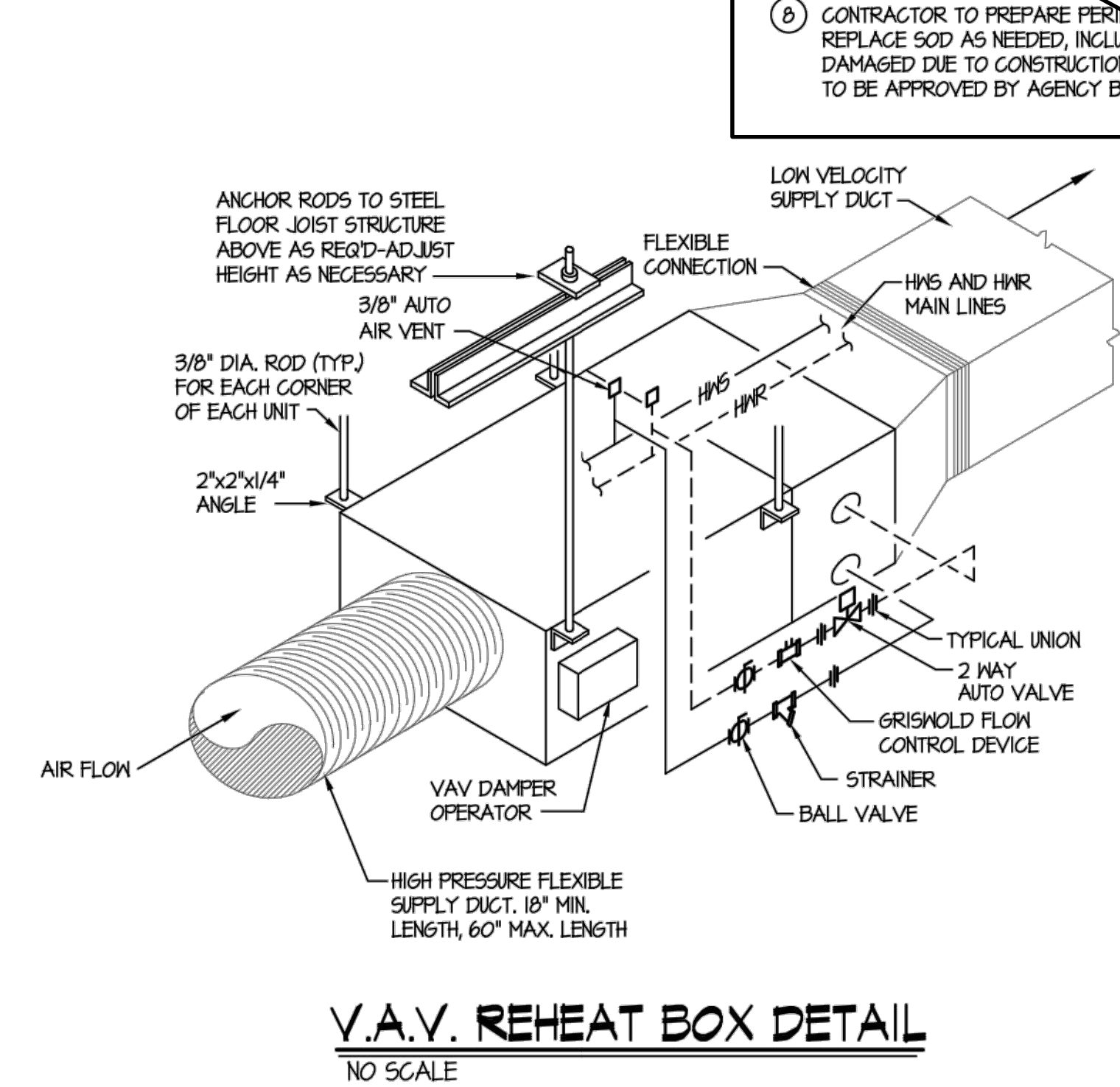
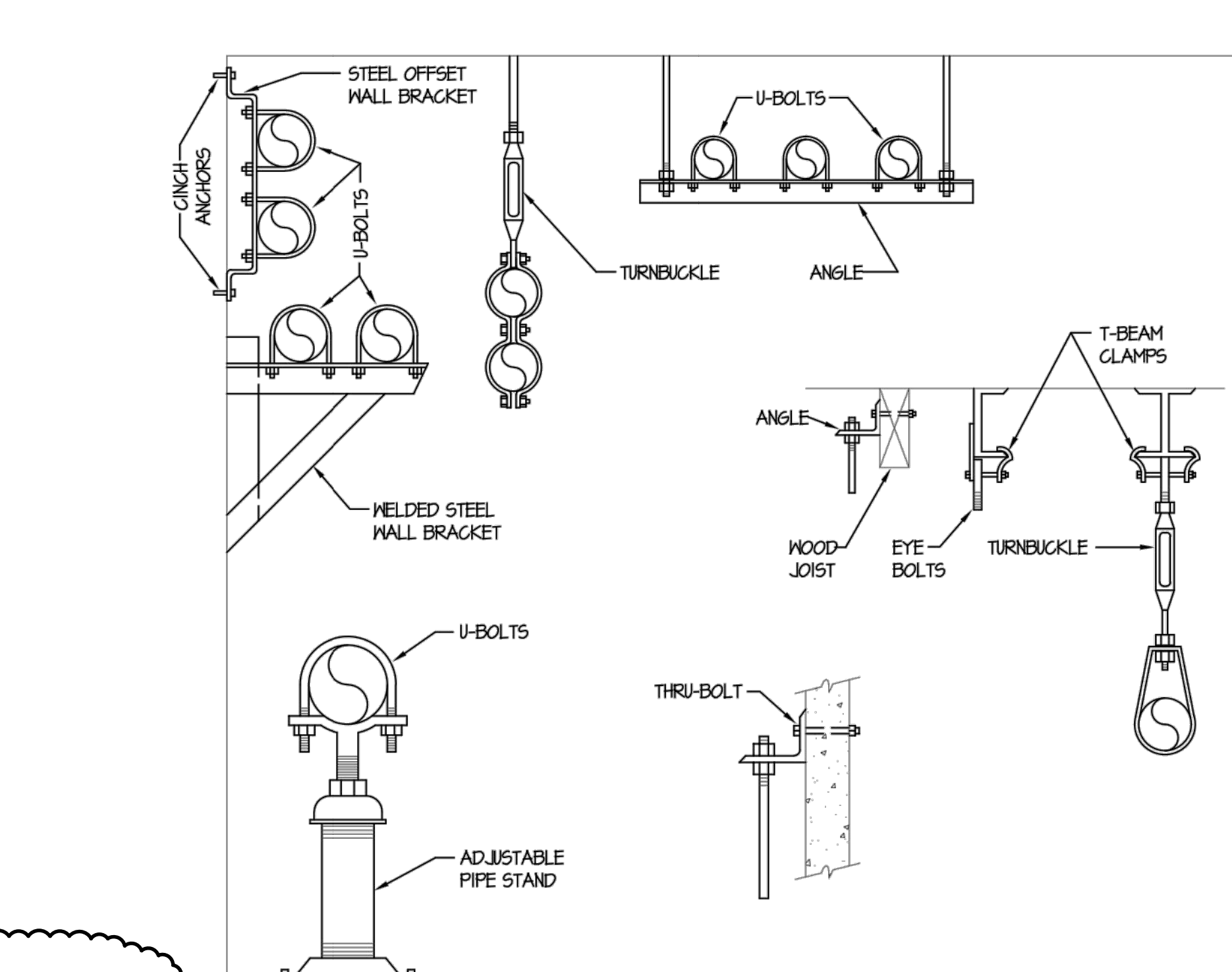
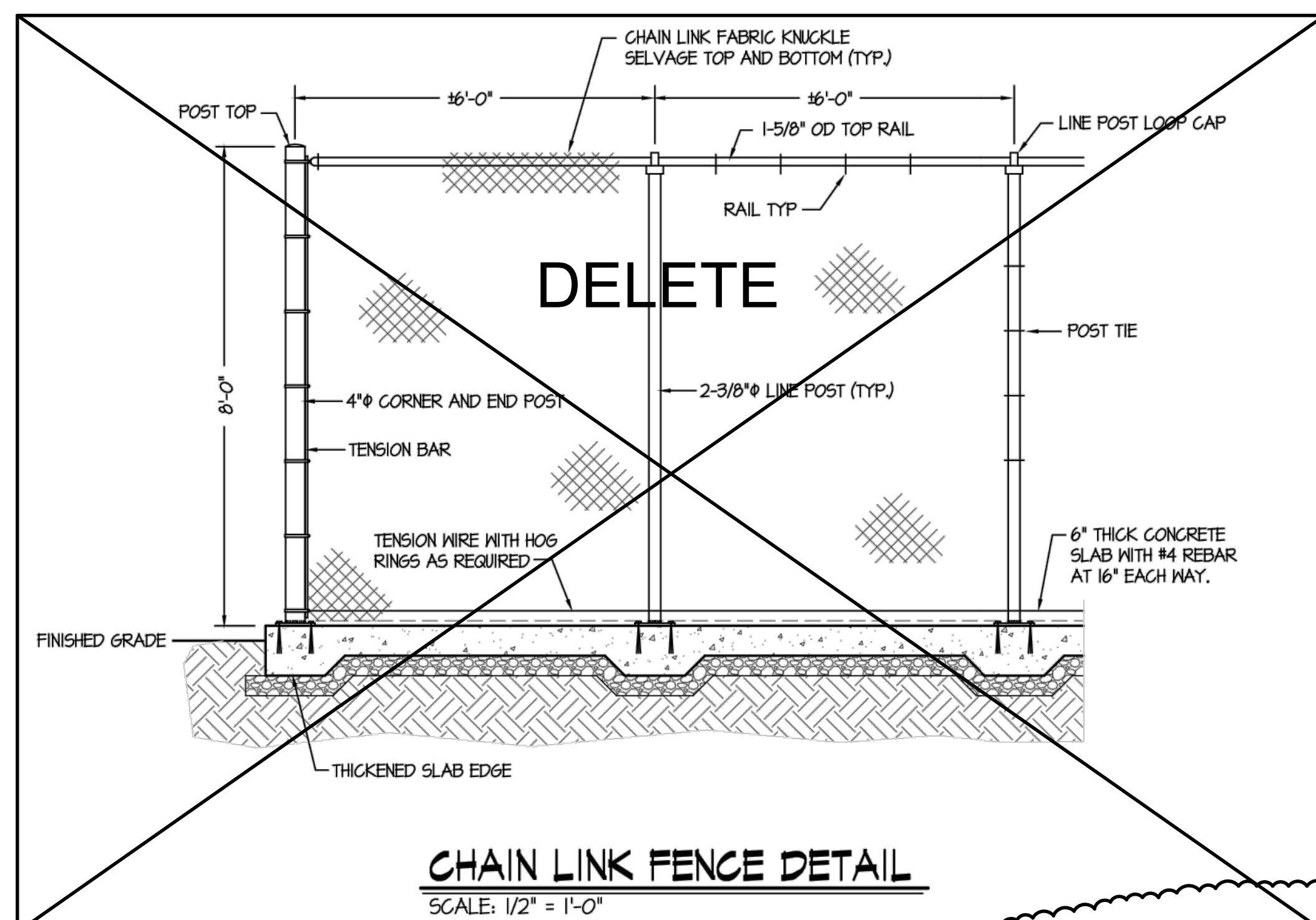



Approved
 State of Idaho
 Professional Engineer
 License No. 15511
 Dwayne C. Sudweeks
 Mechanical Engineering
 15511
 Dwayne C. Sudweeks
 Mechanical Engineering
 15511



- COMPOUND PLAN NOTES:**
- REMOVE EXISTING LAWN SOD TO 2 FEET BEYOND THE EDGE OF THE NEW CONCRETE SLAB AND REMOVE EXISTING SOIL WITHIN THE SLAB PERIMETER TO DEPTH THAT WILL ACCOMMODATE SLAB AND COMPACTED BASE. REFER TO NOTE #2. SLOPE SLAB AT 1% AWAY FROM THE BUILDING.
 - PROVIDE 4" OF COMPACTED GRANULAR BASE AND PLACE 32" O.D. x 14" x 6" THICK CONCRETE SLAB, PROVIDE #4 BARS EACH WAY AT 16" O.C. CONCRETE TO BE 4000 PSI MIX. TOP OF SLAB TO BE 3" ABOVE EXISTING GRADE. UTILIZE SUPPORT CHAIRS TO ENSURE REBAR PLACEMENT IN NEW SLAB. SLOPE PAD AT 1% AWAY FROM BUILDING.
 - CONTRACTOR TO MODIFY AND/OR RELOCATE EXISTING LAWN SPRINKLER PIPING AND HEADS AS REQUIRED TO ACCOMMODATE NEW AIR HANDLER COMPOUND. A PRE-EXCAVATION CONFERENCE WITH THE ISU PROJECT MANAGER AND GROUND SUPERINTENDENT IS REQUIRED.
 - PROVIDE 8' HIGH CHAIN LINK FENCE WITH VERTICAL SLATS, END AND CORNER POSTS TO BE 4" DIAMETER AND LINE POSTS TO BE 2-3/8" DIAMETER. PROVIDE 1-5/8" DIAMETER TOP RAIL AND TENSION WIRE NEAR BOTTOM OF FABRIC, KNUCKLE SELVAGE AT TOP AND BOTTOM OF FABRIC. REFER TO SPECIFICATIONS.
 - PROVIDE 3 FOOT WIDE HINGED GATE WITH LATCH AND PADLOCK HASP.
 - PROVIDE TOOLED CONTROL JOINTS AT 4 EQUAL SPACES NORTH TO SOUTH AND 2 EQUAL SPACES EAST TO WEST.
 - PROVIDE 1/2" EXPANSION MATERIAL BETWEEN NEW SLAB AND EXISTING BUILDING.
 - CONTRACTOR TO PREPARE PERIMETER AREA AND REPLACE SOD AS NEEDED, INCLUDING ANY AREAS DAMAGED DUE TO CONSTRUCTION ACTIVITIES. SOD TO BE APPROVED BY AGENCY BEFORE PLACING.




Engineered Systems Associates
Mechanical Engineers
 Dwayne Sudweeks
 1555 East Center - Pocatello, Idaho 83201
 Phone: (208) 233-0501 Fax: (208) 233-0529 email: esa@engsystems.com

HVAC UPGRADE FOR: DPW PROJECT # 19243
ISU LIFE SCIENCE BUILDING
 ANIMAL CARE FACILITY
 POCATELLO, IDAHO
 PROJECT:

SHEET TITLE: **LARGE SCALE PLANS AND DETAILS**
 SHEET: **M.1.2**
 OF: FIVE

PROFESSIONAL ENGINEER
 REGISTERED
 Dwayne C. Sudweeks
 15511
 STATE OF IDAHO
 DWAYNE C. SUDWEEKS

DRAWN BY: M. JENSEN
 JOB NO.: 19013
 DATE: JULY 2014
 OKD BY: D. SUDWEEKS
 SHEET: M.1.2
 OF: FIVE

F:\M\191 Animal Care Life Science\19013-M1.2.dwg Sep 05, 2014 - 5:21pm